

Arizona's Food Bank Supply Chain

Spotlight on Produce: Part 1



Our Mission: Providing Fresh Produce to Feed Arizona's Hungry Families



Arizona's Food Bank Supply Chain

Produce Spotlight: Nogales, AZ



Arizona's Food Bank Supply Chain

Produce Spotlight: Nogales, AZ



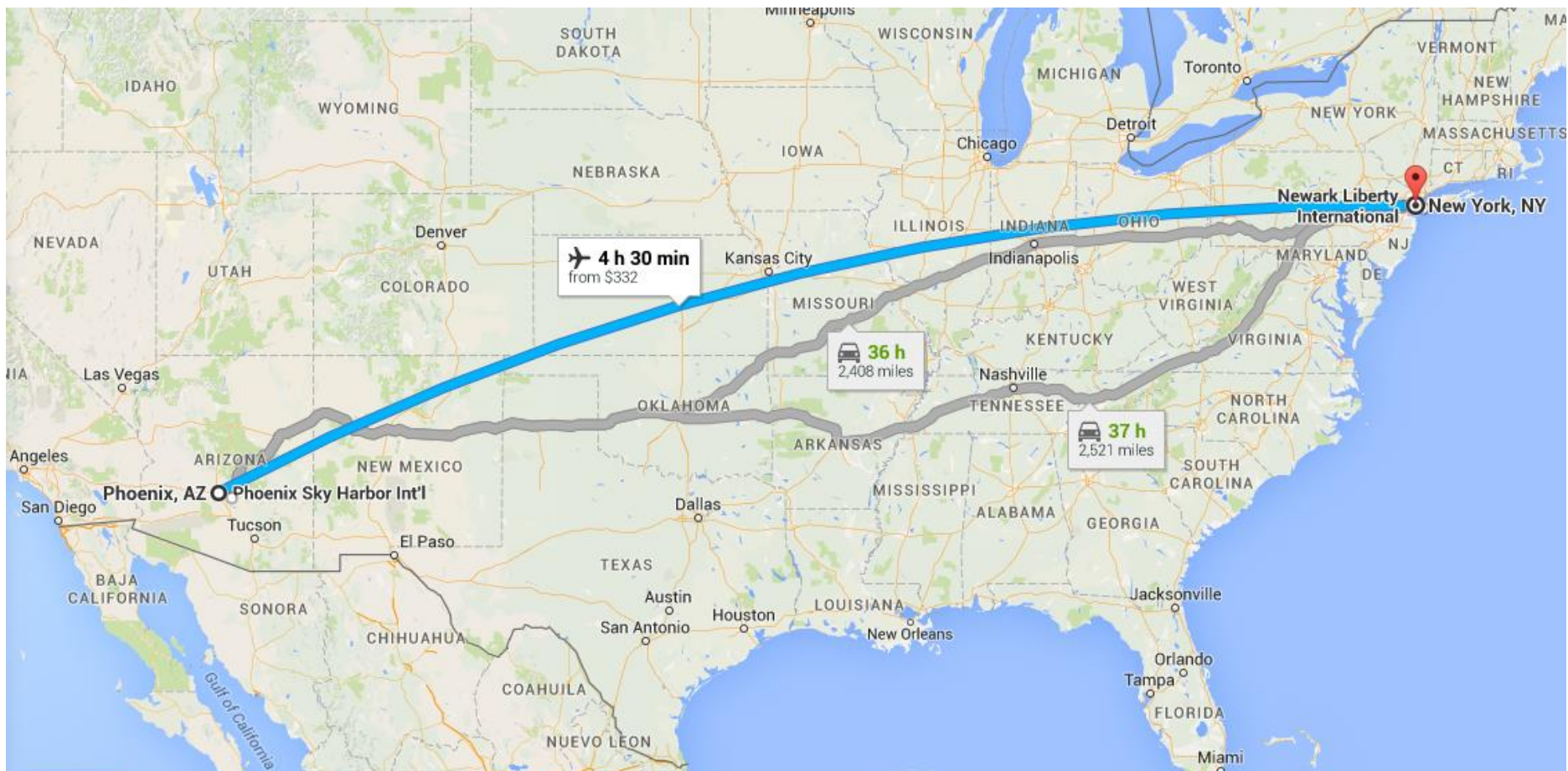
Produce Fast Facts:



Community Food Bank
of Southern Arizona

5.9 BILLION pounds of Produce are imported to the U.S. from Mexico each year through the Nogales Port of Entry.

That's 147,500 truckloads of produce!



Produce Fast Facts:

If you lined up all of those trucks bumper-to-bumper, that's enough trucks to stretch from Phoenix to New York City - Annually!

Arizona's Food Bank Supply Chain

Produce Spotlight: Nogales, AZ



Produce Fast Fact:

The value of the produce entering the US through the Nogales Port of Entry exceeds \$2.5 Billion Dollars annually.



Community Food Bank
of Southern Arizona

Mexico Produce and Growing Regions



Arizona's Food Bank Supply Chain

Produce Spotlight: Nogales, AZ



Produce Fast Fact:

More than 50 types of Mexican-grown fruits and vegetables are imported to the U.S. through Nogales.



Community Food Bank
of Southern Arizona

Top 10 Nogales Produce Imports by Volume

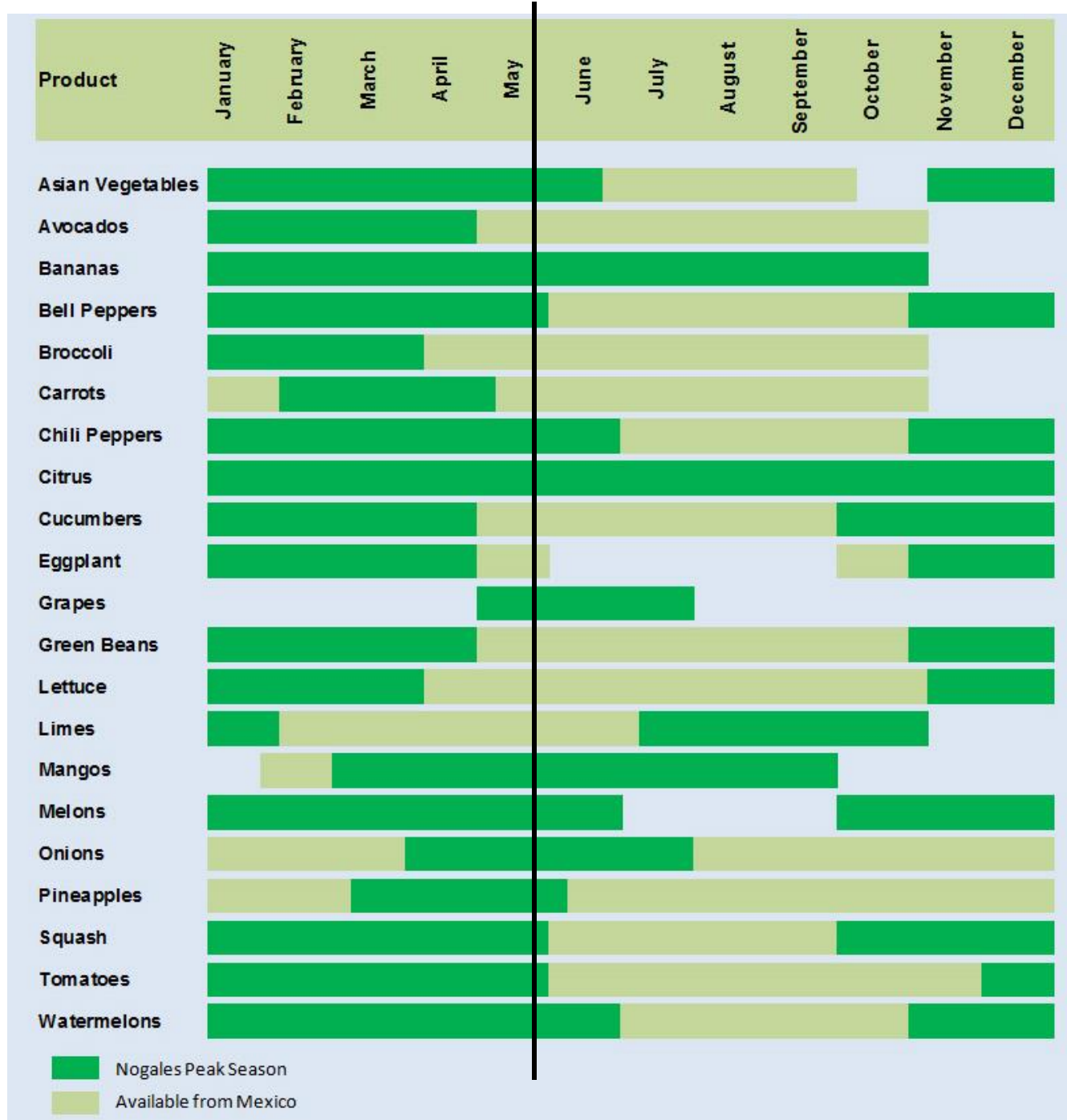
Tomatoes	1,123,825,000
Watermelons	1,111,168,000
Cucumbers	784,527,000
Squash	622,265,000
Bell Peppers	571,723,000
Grapes	314,994,000
Melons	226,801,000
Mangoes	215,092,000
Chili Peppers	210,146,000
Eggplant	99,623,000
Total	5.2 Billion Pounds



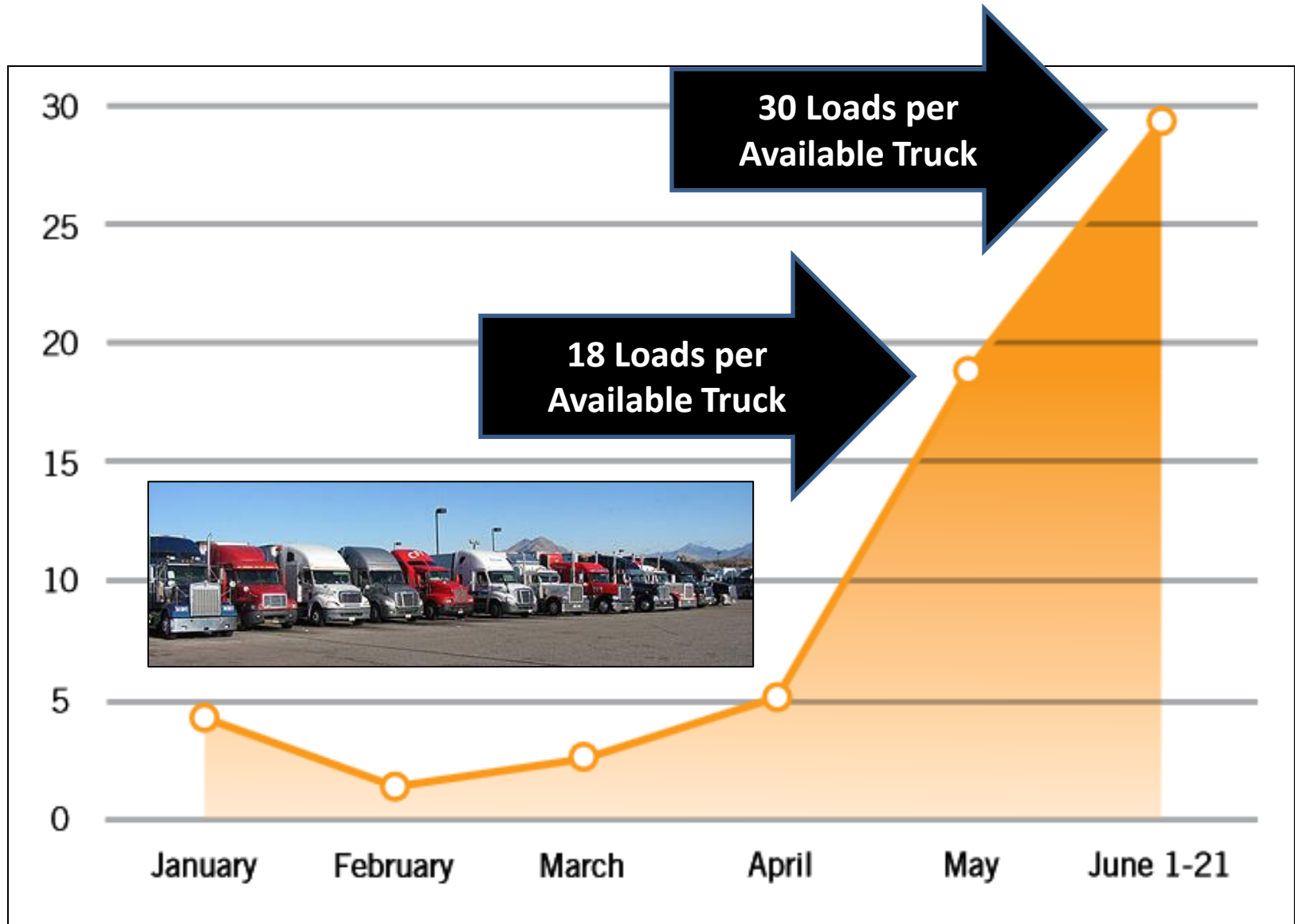
132,000 Truckloads

Data from Fresh Produce Association of the Americas

Nogales Peak Season



Nogales, AZ Loads per Available Truck



Mariposa Port of Entry Nogales, AZ



Shout-out: Team Nogales!



**Community Food Bank
of Southern Arizona**

Iliana Ley



**Community Food Bank
of Southern Arizona**



Nogales Regional Fresh Produce Resourcer



Rob O'Brien

Logistics Manager



St. Mary's
Food Bank
ALLIANCE®

**Special Duty Assignment 2016 Season:
Nogales Regional Fresh Produce Resourcer**

Arizona's Food Bank Supply Chain

Produce Spotlight: Yuma, AZ



YUMA
COMMUNITY
FOOD
BANK

Serving Southwestern Arizona



Arizona's Food Bank Supply Chain

Produce Spotlight: Yuma, AZ



Produce Fast Fact:

Yuma County is 3rd in the nation for vegetable production.

YUMA
COMMUNITY
FOOD
BANK
Serving Southwestern Arizona

Arizona's Food Bank Supply Chain

Produce Spotlight: Yuma, AZ



Produce Fast Fact:

90% of all the leafy vegetables grown in the U.S. from November through March are grown in and around the Yuma area.



Arizona's Food Bank Supply Chain

Produce Spotlight: Yuma, AZ



Produce Fast Fact:

1,000 trucks, each carrying about 1,000 boxes of produce destined for grocery stores and restaurants from Seattle to Miami, leave Yuma every night (November – March).

YUMA
COMMUNITY
FOOD
BANK
Serving Southwestern Arizona

Arizona's Food Bank Supply Chain

Produce Spotlight: Yuma, AZ



Produce Fast Fact:

The 35 growers in the Yuma area require 50,000 workers per day in the November through March season.

YUMA
COMMUNITY
FOOD
BANK
Serving Southwestern Arizona

Arizona's Food Bank Supply Chain

Produce Spotlight: Yuma, AZ



Produce Fast Fact:

During peak production months, each of the 9 salad production facilities in Yuma processes more than two million pounds of lettuce per day.

YUMA
COMMUNITY
FOOD
BANK
Serving Southwestern Arizona

Arizona's Food Bank Supply Chain

Produce Spotlight: Yuma, AZ



Produce Fast Fact:

Yuma is the top producer of melons in Arizona, with most of the crop grown in the spring (there are 10K plus acres of melons grown in Yuma County).



Yuma, AZ



YUMA
COMMUNITY
FOOD
BANK
Serving Southwestern Arizona

Arizona's Food Bank Supply Chain

Produce Spotlight: Central AZ



St. Mary's
Food Bank
ALLIANCE®

Arizona's Food Bank Supply Chain

Produce Spotlight: Central AZ



Produce Fast Fact:

There are 2,479 farms in Maricopa County, 76 of which are 1,000 acres or more (1,495 are under 10 acres).

Arizona's Food Bank Supply Chain

Produce Spotlight: Central AZ



Produce Fast Fact:

30% of the farms operated in Central Arizona are female-owned.

Arizona's Food Bank Supply Chain

Produce Spotlight: Central AZ



Produce Fast Fact:

Miedema Produce, located in Surprise, Arizona, is one of the largest carrot growers in North America.



Arizona's Food Bank Supply Chain

Produce Spotlight: Central AZ



Produce Fast Fact:

Martori Farms grows cantaloupes, honeydews, and other melons on more than 9,000 acres in Aguila, AZ. They are the main supplier of melons to Walmart.

Arizona's Food Bank Supply Chain

Produce Spotlight: Central AZ



Produce Fast Fact:

Duncan Family Farms is one of the leading organic growers in the U.S. Using ADOC inmate labor, St. Mary's gleans more than a million pounds of cabbage annually from the Duncan fields in Goodyear, AZ.

**Just a couple
of guys out
standing in
their field!**



St. Mary's
Food Bank
ALLIANCE®



Got Potatoes?



Arizona's Food Bank Supply Chain

Spotlight on Produce: Part 2

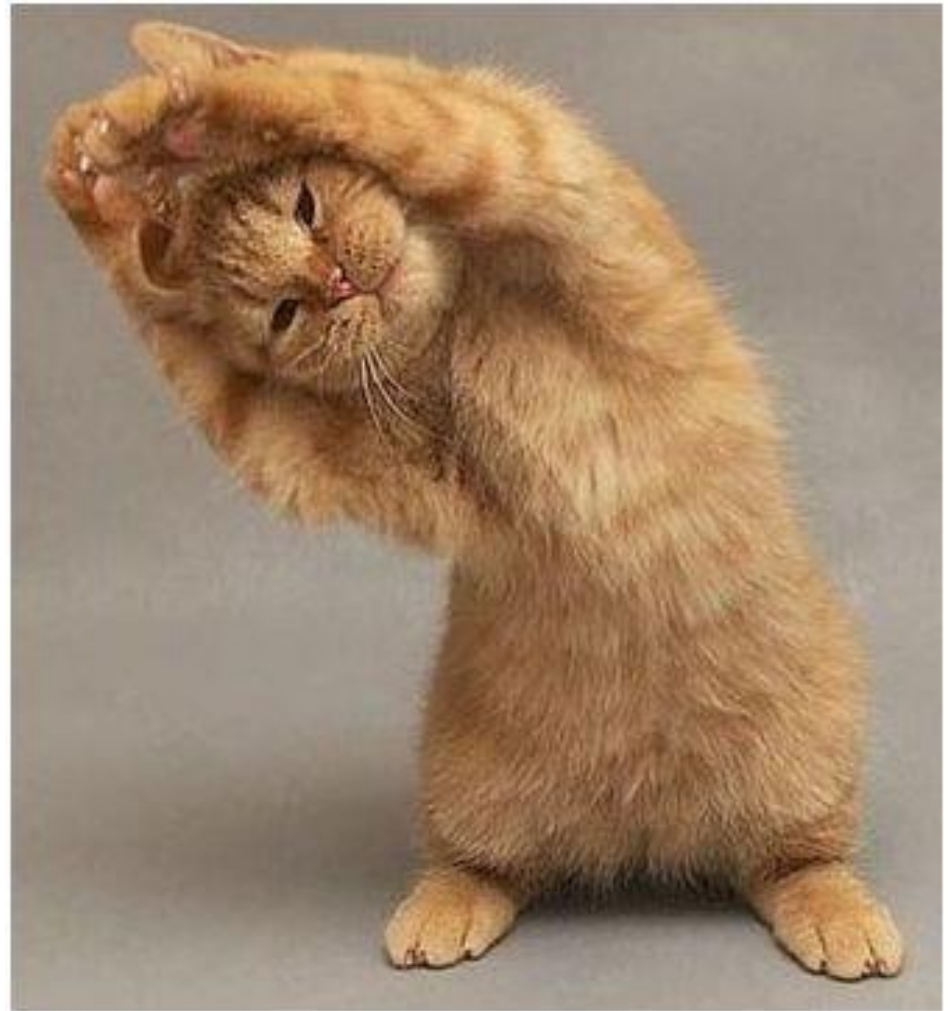


Next Up: A Quick Produce Survey

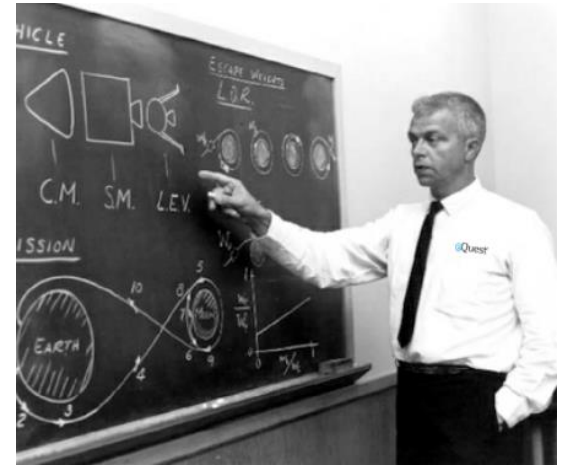
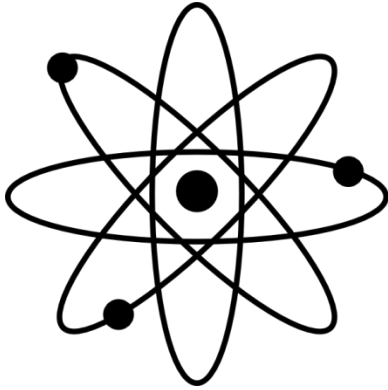


But First...

It's time to
STRETCH

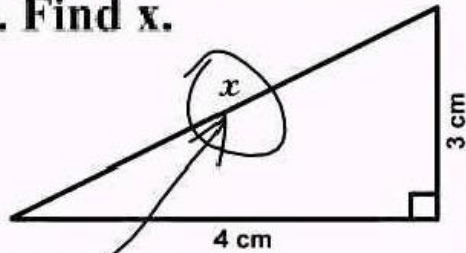


A Very “Unscientific” Survey...



How Can We Distribute More Fresh Produce?

3. Find x.



Here it is

Periodic Table of the Elements																		H					
1 H Hydrogen 1.008																	18 Ar Argon 39.948						
3 Li Lithium 6.941	4 Be Beryllium 9.012																	19 K Potassium 39.098	20 Ca Calcium 40.078				
		5 B Boron 10.811	6 C Carbon 12.011	7 N Nitrogen 14.007	8 O Oxygen 15.999	9 F Fluorine 18.998	10 Ne Neon 20.180											17 Cl Chlorine 35.453	18 Ar Argon 39.948				
11 Na Sodium 22.990	12 Mg Magnesium 24.305																	13 Al Aluminum 26.982	14 Si Silicon 28.086	15 P Phosphorus 30.974	16 S Sulfur 32.06	17 Cl Chlorine 35.453	18 Ar Argon 39.948
19 K Potassium 39.098	20 Ca Calcium 40.078	21 Sc Scandium 44.956	22 Ti Titanium 47.88	23 V Vanadium 50.942	24 Cr Chromium 51.996	25 Mn Manganese 54.938	26 Fe Iron 55.845	27 Co Cobalt 58.933	28 Ni Nickel 58.693	29 Cu Copper 63.546	30 Zn Zinc 65.38	31 Ga Gallium 69.723	32 Ge Germanium 72.64	33 As Arsenic 74.922	34 Se Selenium 78.96	35 Br Bromine 79.904	36 Kr Krypton 83.8						
37 Rb Rubidium 85.468	38 Sr Strontium 87.62	39 Y Yttrium 88.906	40 Zr Zirconium 91.224	41 Nb Niobium 92.906	42 Mo Molybdenum 95.94	43 Tc Technetium 98	44 Ru Ruthenium 101.07	45 Rh Rhodium 102.905	46 Pd Palladium 106.42	47 Ag Silver 107.868	48 Cd Cadmium 112.411	49 In Indium 114.818	50 Sn Tin 118.710	51 Sb Antimony 121.757	52 Te Tellurium 127.6	53 I Iodine 126.905	54 Xe Xenon 131.29						
55 Cs Cesium 132.905	56 Ba Barium 137.327	57-71 Lanthanides		72 Hf Hafnium 178.49	73 Ta Tantalum 180.948	74 W Tungsten 183.84	75 Re Rhenium 186.207	76 Os Osmium 190.23	77 Ir Iridium 192.222	78 Pt Platinum 195.084	79 Au Gold 196.967	80 Hg Mercury 200.59	81 Tl Thallium 204.384	82 Pb Lead 207.2	83 Bi Bismuth 208.980	84 Po Polonium 209	85 At Astatine 210	86 Rn Radon 222					
87 Fr Francium 223	88 Ra Radium 226	89-103 Actinides		104 Rf Rutherfordium 261	105 Db Dubnium 262	106 Sg Seaborgium 266	107 Bh Bohrium 264	108 Hs Hassium 277	109 Mt Meitnerium 268	110 Ds Darmstadtium 271	111 Rg Roentgenium 272	112 Cn Copernicium 285	113 Nh Nihonium 286	114 Fl Flerovium 289	115 Uu Ununpentium 288	116 Lv Livermorium 293	117 Uus Ununseptium 294	118 Uuo Ununoctium 294					
72 La Lanthanum 138.905	58 Ce Cerium 140.12	59 Pr Praseodymium 140.908	60 Nd Neodymium 144.24	61 Pm Promethium 145	62 Sm Samarium 150.36	63 Eu Europium 151.964	64 Gd Gadolinium 157.25	65 Tb Terbium 158.925	66 Dy Dysprosium 162.50	67 Ho Holmium 164.930	68 Er Erbium 167.259	69 Tm Thulium 168.934	70 Yb Ytterbium 173.054	71 Lu Lutetium 174.967									
88 Ac Actinium 227	90 Th Thorium 232.038	91 Pa Protactinium 231.036	92 U Uranium 238.029	93 Np Neptunium 237.048	94 Pu Plutonium 244.064	95 Am Americium 243.061	96 Cm Curium 247.070	97 Bk Berkelium 247.070	98 Cf Californium 251.083	99 Es Einsteinium 252.083	100 Fm Fermium 257.103	101 Md Mendelevium 258.103	102 No Nobelium 259.103	103 Lr Lawrencium 262									

$$E=mc^2$$

Question #1: Raise your hand if you currently have cooler space available for more fresh produce...



The Problem: Agency Capacity

Case Study: “The combined cooler space of all of the 500+ agency partners of St. Mary’s Food Bank is less square footage than the cooler space at St. Mary’s alone.”

**Combined Cooler
Space of St. Mary’s
500+ Agency
Partners**

**St. Mary’s
Cooler Space**

Question #2: Raise your hand if you think we can solve the problem of how to distribute more produce by increasing agency cooler space...



**Combined Cooler
Space of St. Mary's
500+ Agency
Partners**

**St. Mary's
Cooler Space**

Question #3: *Raise your hand if you want more fresh produce to distribute (cooler space notwithstanding)...*



Question #4: Raise your hand if you could distribute more fresh produce if it was delivered to you on the same day as your distribution...



Question #5: Raise your hand if you could host an additional fresh produce distribution in your community if we supplied a truck and driver onsite for the distribution...



How to Distribute More Fresh Produce: Food Bank Supply Chain 101



Excess Food



Hungry People



STEP #1: Source to Excess aka - *The Produce Apocalypse*



STEP #2:



It's Logistics!



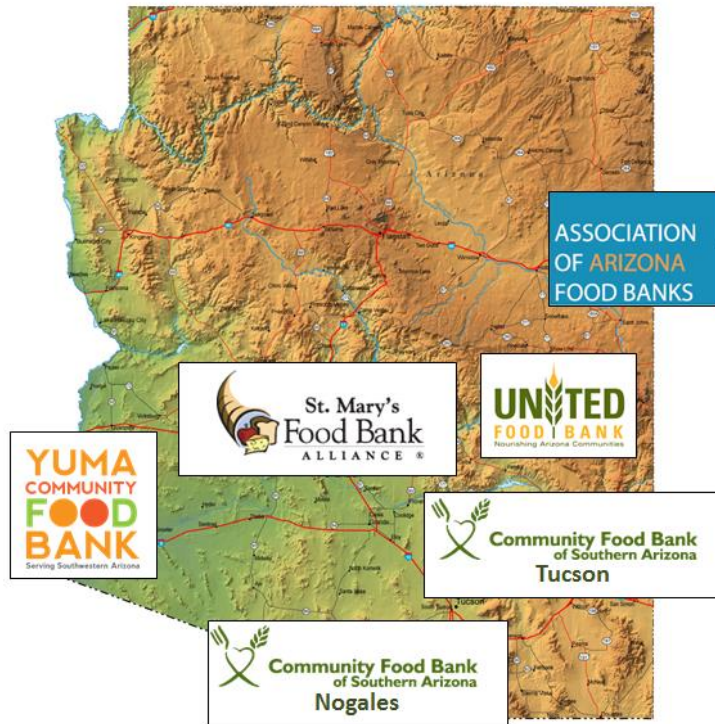
Arizona's Food Bank Supply Chain

Spotlight on Produce: Part 3



Arizona's Food Bank Supply Chain

Partnership & Collaboration



The Logistics Task Force

Arizona's Food Bank Supply Chain

More than 100 million total pounds of food transported since the Task Force began in 2012—41.1 million pounds of that produce.

ASSOCIATION
OF ARIZONA
FOOD BANKS

YUMA
COMMUNITY
FOOD
BANK
Serving Southwestern Arizona

 **St. Mary's**
Food Bank
ALLIANCE

UNITED
FOOD BANK
Nourishing Arizona Communities



Community Food Bank
of Southern Arizona
Tucson



Community Food Bank
of Southern Arizona
Nogales

Shout-out: AAFB and the Arizona Statewide Gleaning Project!



**388 Million Pounds of
Fresh Produce
Transported since 1999.**

**Over 975 Million Total
Pounds of Food Transported
since 1993.**





Community Food Bank
of Southern Arizona



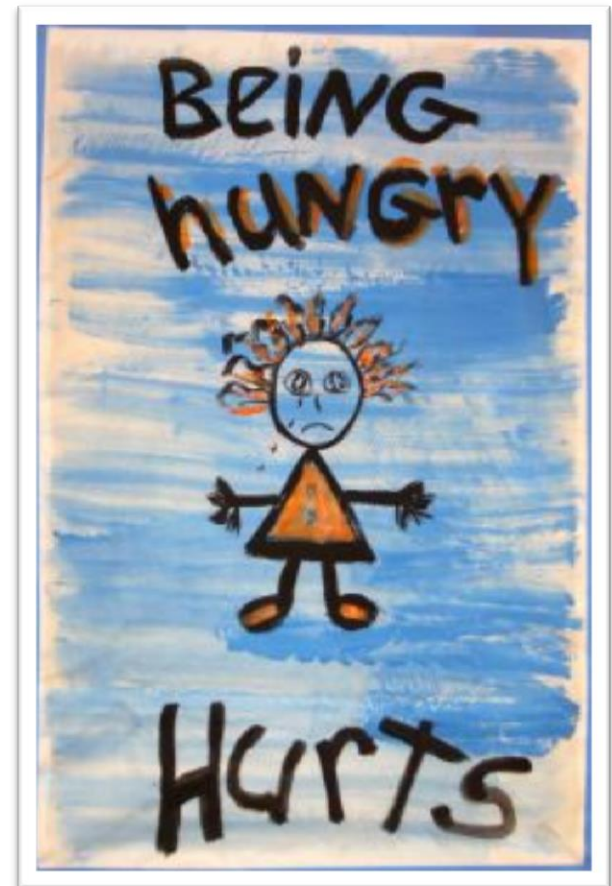
St. Mary's
Food Bank
ALLIANCE®

SMFBA/CFBSA Strategic Food **Sourcing Partnership**

**A Cooperative Enterprise Based
upon Abundance, Partnership, and
Sustainability**

Guiding Principles for the CFBSA/SMFBA Food Sourcing Partnership

“Ensure a constant, sustainable, and consistent level of food for our clients and partner agencies, regardless of where they live.”



Guiding Principles for the CFBSA/SMFBA **Food Sourcing Partnership**

“Foster a spirit and vision of abundance, trust, and expanding partnership for the benefit of those who are hungry and suffering from a lack of access to nutritious food.



Guiding Principle for the CFBSA/SMFBA Food Sourcing Partnership

“Sourcing to excess will be the standard, not the exception for the benefit of the state of Arizona and the larger national network of Feeding America food banks.”



Partnership Accomplishments to Date

- 1. Awarded joint grant funding for the Nogales Regional Fresh Produce Sourcer position for FY16 and FY17.**
- 2. Awarded joint grant funding for FY17 for 1 full-time and 2 seasonal driver positions to support sourcing and statewide distribution efforts.**



Partnership Accomplishments to Date

3. Expanded sourcing efforts in Nogales already showing results, with near-record levels of donations for April and May.



FY17 Fresh Produce Partnership Goals

- 1. Significantly increase produce donations through expansion of regional joint sourcing efforts.**



FY17 Fresh Produce Partnership Goals

2. **Significantly increase statewide produce distributions through just-in-time deliveries and onsite distributions using grant-funded drivers.**



**Which is Where You
Come in!**

The Produce Express



Coming Your Way Soon!